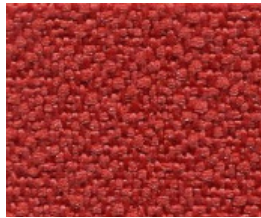


BERICOPLAST SPA - Fabrics Color Charts FLORENCE



B1008



B4004



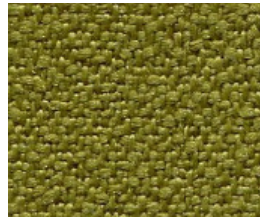
B4011



B4017



B6015



B7021



B8033



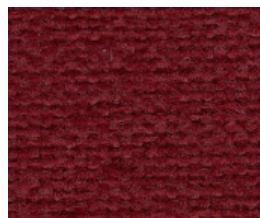
B8078



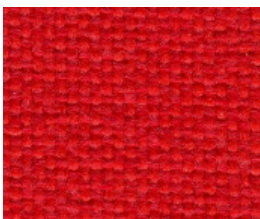
J2024



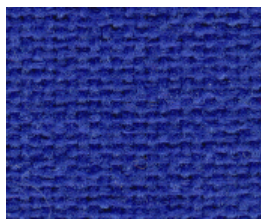
J3030



J4018



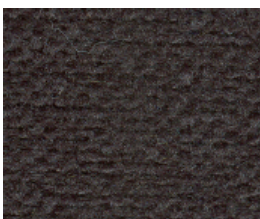
J4028



J6095



J7025



J8033



J8078

FABRICS SPECIFICATIONS:

The fabric called **B** is a NOT-FIREPROOF fabric.

The fabric **J** is a FIREPROOF fabric CL 1 M1 B1.

TERMS AND CONDITIONS OF SALE:

- development chair florence = 0,67 m
- the rolls of fabrics are 50mt x h140cm.

As these are reproductions, the photographs are understood to be similar to the actual fabric.

WE CAN MANUFACTURE SPECIAL BATCHES AND/OR USING THE CUSTOMER'S FABRICS, PROVIDED THAT THESE ARE FOR MINIMUM QUANTITIES THAT COMPLY WITH THE FABRIC MANUFACTURER'S PURCHASE REQUIREMENTS.