

BERICOPLAST SPA - Leather Color Charts OLA



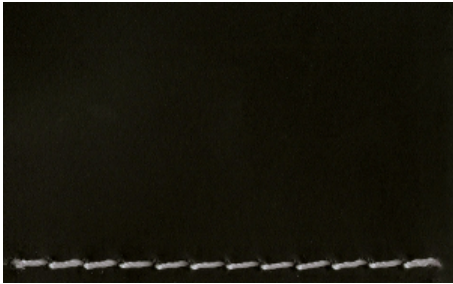
pan



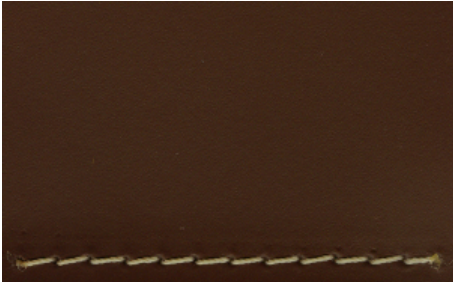
pav



pbs



pne



ptm



pts



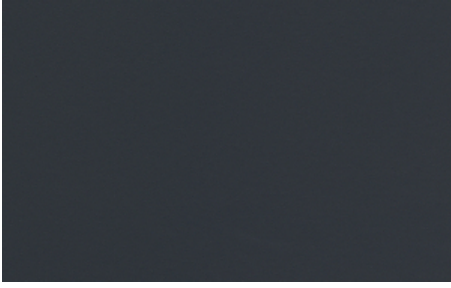
50-dove



60-brown

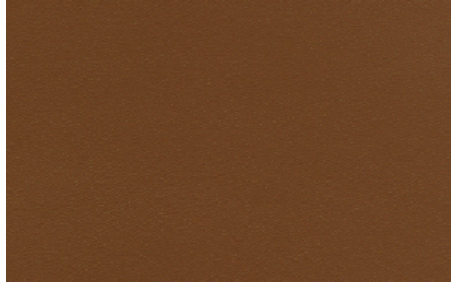


66-navy-blue



85-midnight-blue

79-hemp



88-tobacco



89-red



97-cream

The leather serie can be **1 IM Class**.

As these are reproductions, the photographs are understood to be similar to the actual fabric.

WE CAN MANUFACTURE SPECIAL BATCHES AND/OR USING THE CUSTOMER'S FABRICS, PROVIDED THAT THESE ARE FOR MINIMUM QUANTITIES THAT COMPLY WITH THE FABRIC MANUFACTURER'S PURCHASE REQUIREMENTS.